



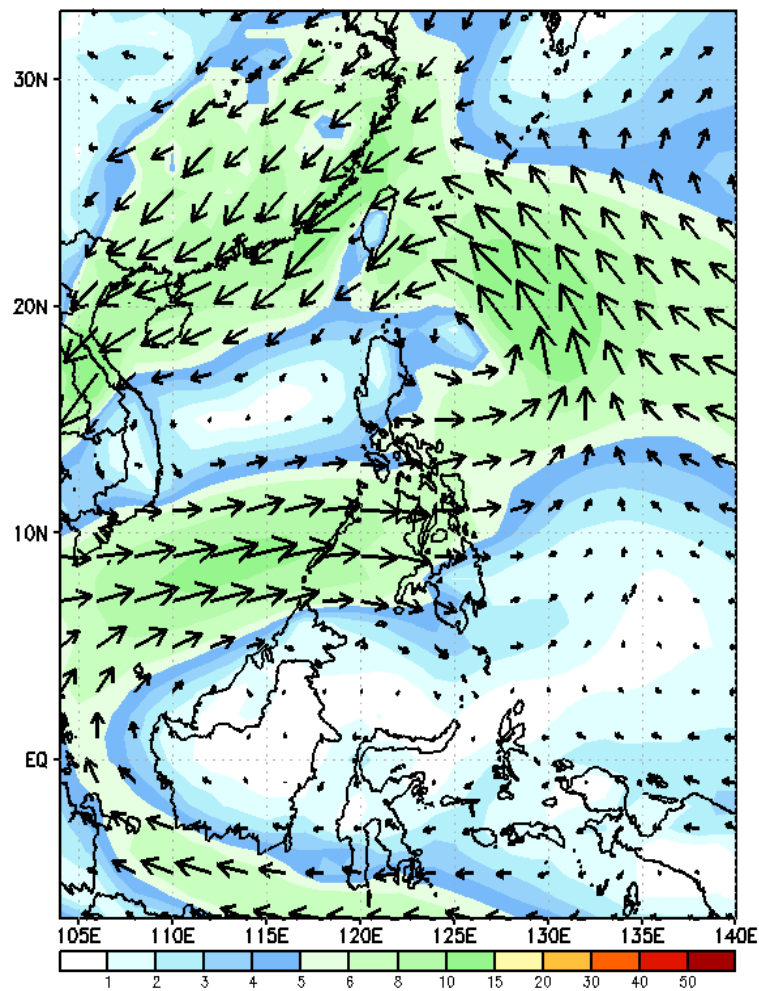
Week 1 & Week 2 Forecast for the Philippines using GEFS Model



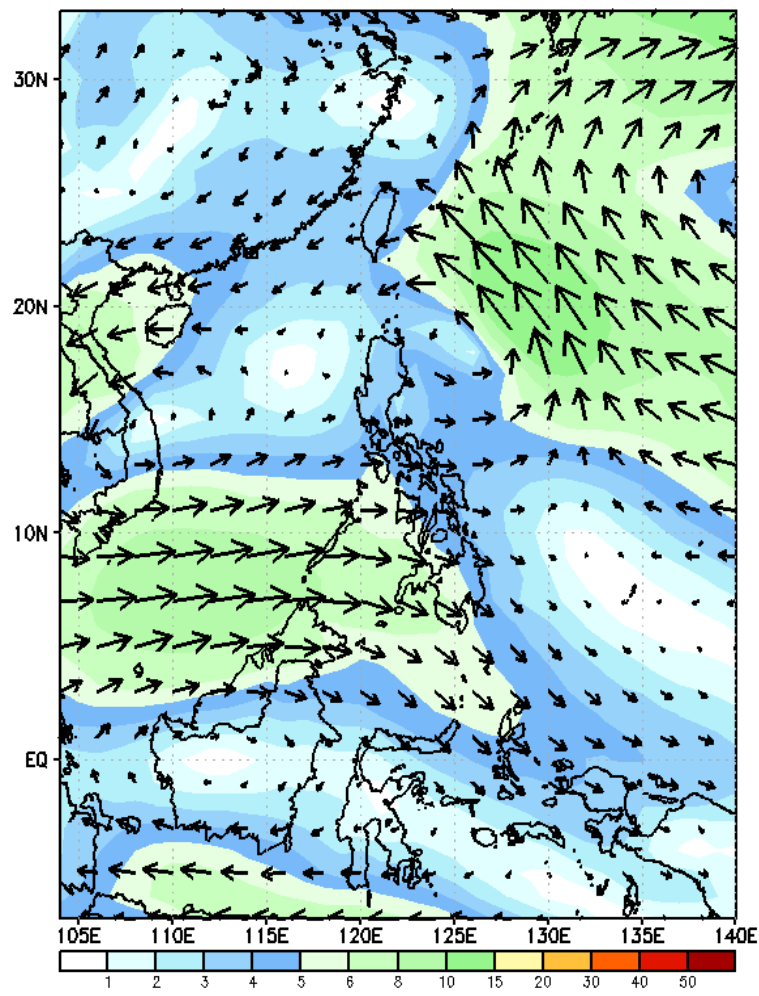
GEFS Week-1 Wind Forecasts:

Week 1: Oct 28- Nov 03, 2024

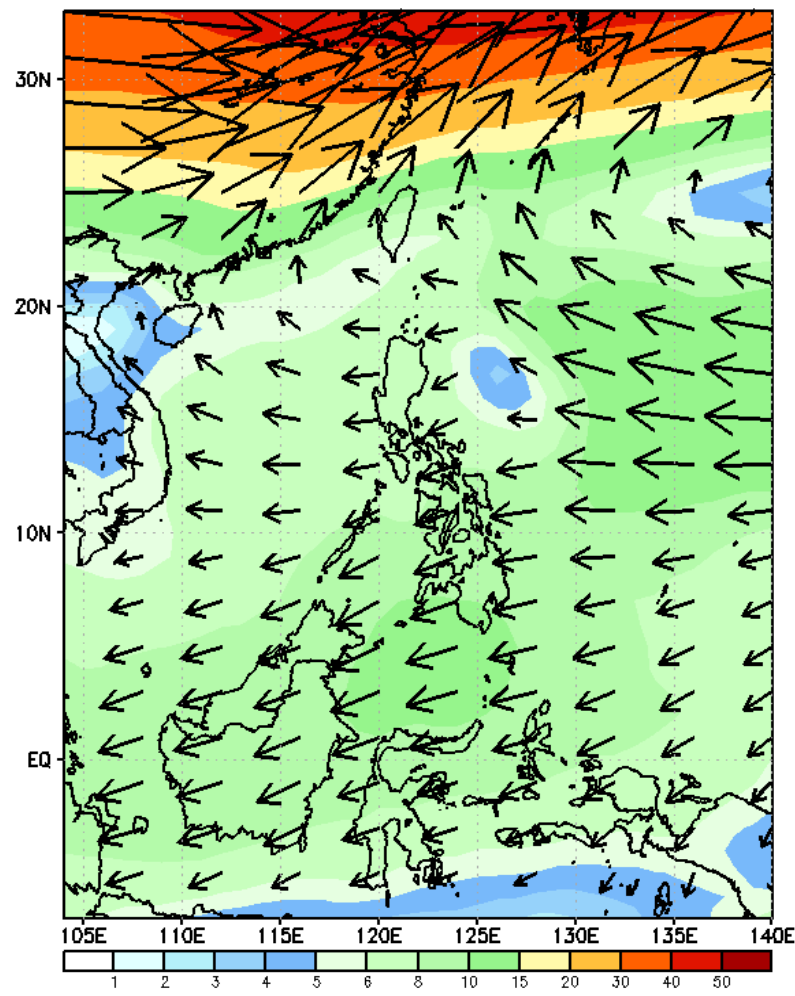
GEFS Week-1 850-hPa Wind Total
Valid: 20241028 - 20241103



GEFS Week-1 700-hPa Wind Total
Valid: 20241028 - 20241103



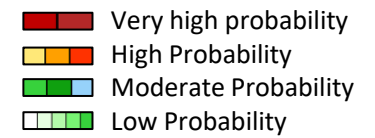
GEFS Week-1 200-hPa Wind Total
Valid: 20241028 - 20241103



Westerly to Southwesterly windflow affecting most parts of the country. Northeasterly windflow affecting Extreme Northern Luzon.

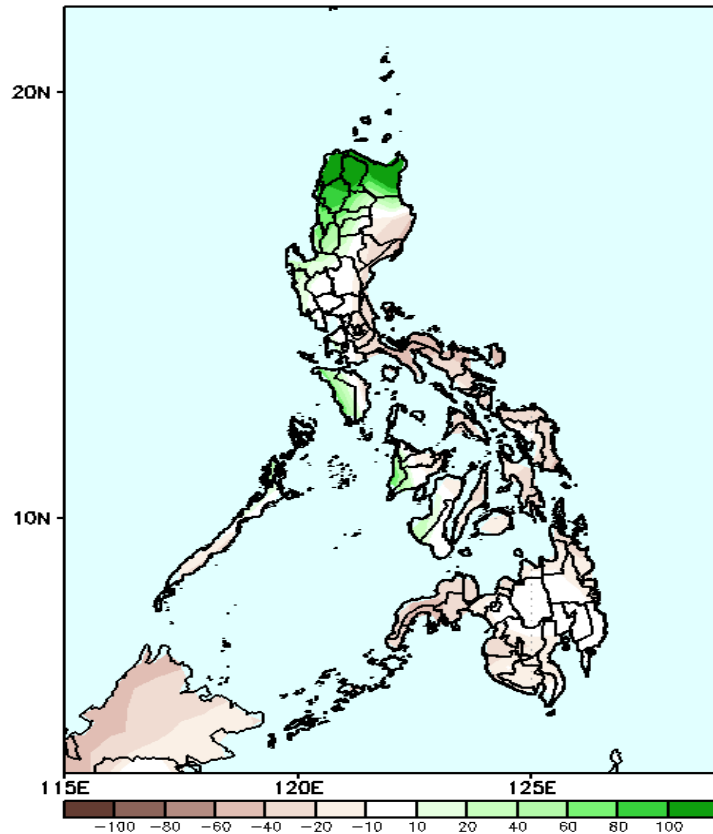


Precipitation Anomaly and Exceedance Probability > 25/50 mm



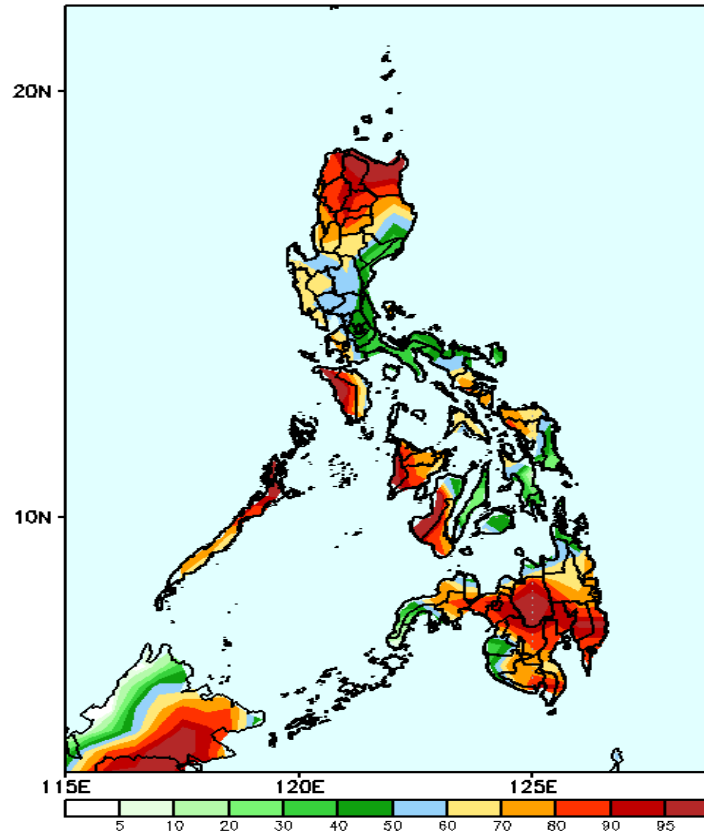
Week 1: Oct 28- Nov 03, 2024

GEFS Week-1 Precip Anomaly
Valid: 20241028 - 20241103



Increase of rainfall of more than 100mm is expected in extreme parts of Northern Luzon; 20-80mm in Ilocos Region, CAR, Occidental Mindoro, and Antique while 20-80mm rainfall deficit is more likely for the rest of the country.

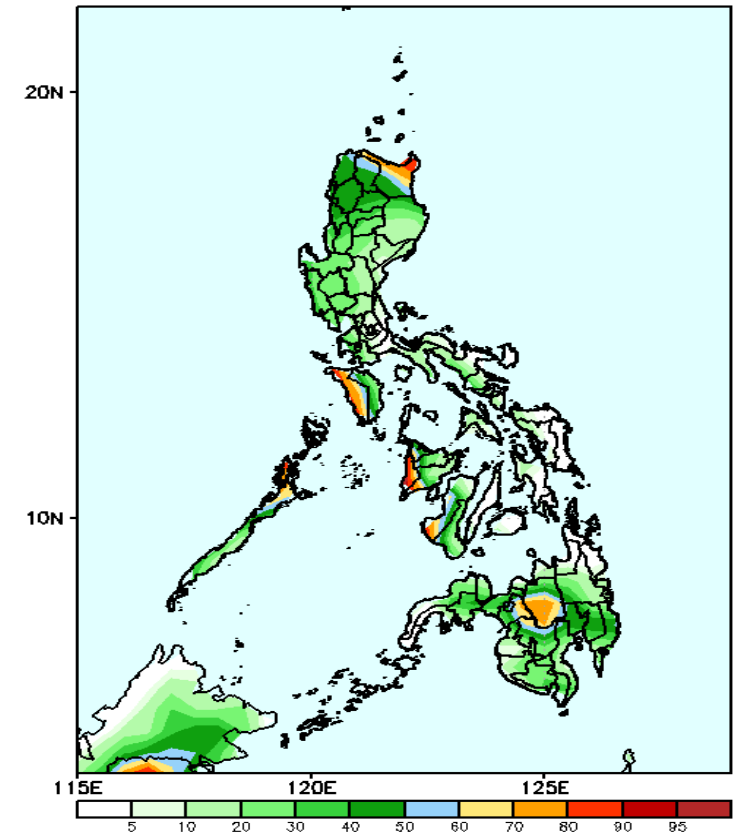
GEFS Week-1 Exceedance Prob. > 25mm
Valid: 20241028 - 20241103



Probability to Exceed 25mm

- High to very high over most parts of Northern Luzon, Mindoro, Palawan, eastern Visayas, northern Samar, and Mindanao
- Moderate to high over the rest of Luzon & Visayas, Caraga Region, Misamis Oriental, Zamboanga Peninsula, Maguindanao, and Sultan Kudarat.

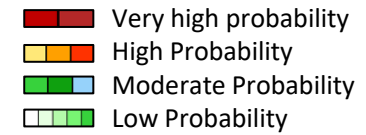
GEFS Week-1 Exceedance Prob. > 50mm
Valid: 20241028 - 20241103



Probability to Exceed 50mm

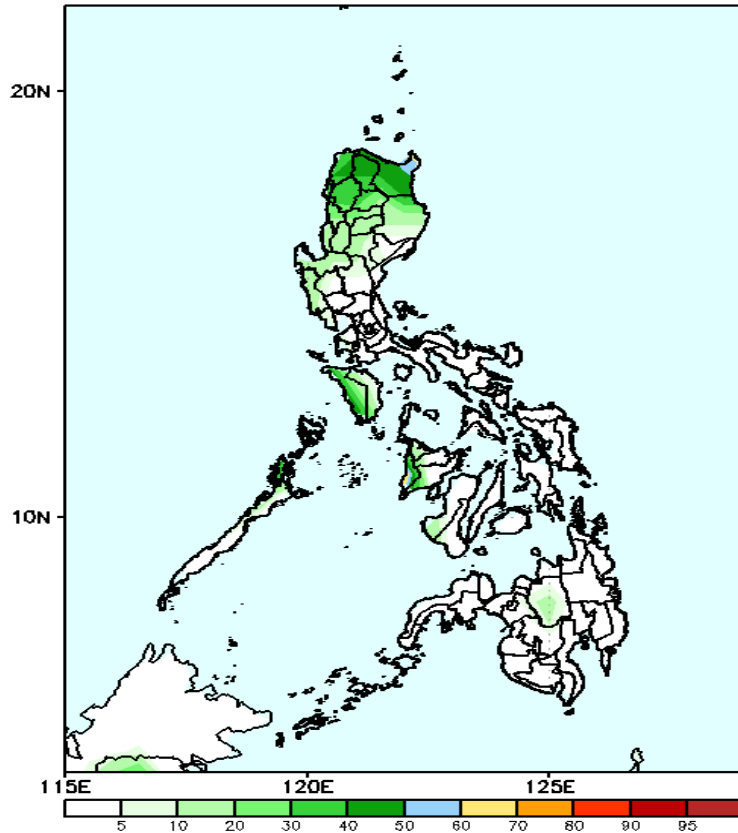
- High to very high over Extreme Northern Luzon;
- Moderate to high over the rest of Cagayan, northern part of Apayao, Occidental Mindoro, northern part of Palawan, Antique, western part of Iloilo and Negros Occidental, Bukidnon, Lanao Provinces, and northern part of North Cotabato;
- Low to moderate over the rest of the country.

Exceedance Probability > 100/150/200 mm



Week 1: Oct 28- Nov 03, 2024

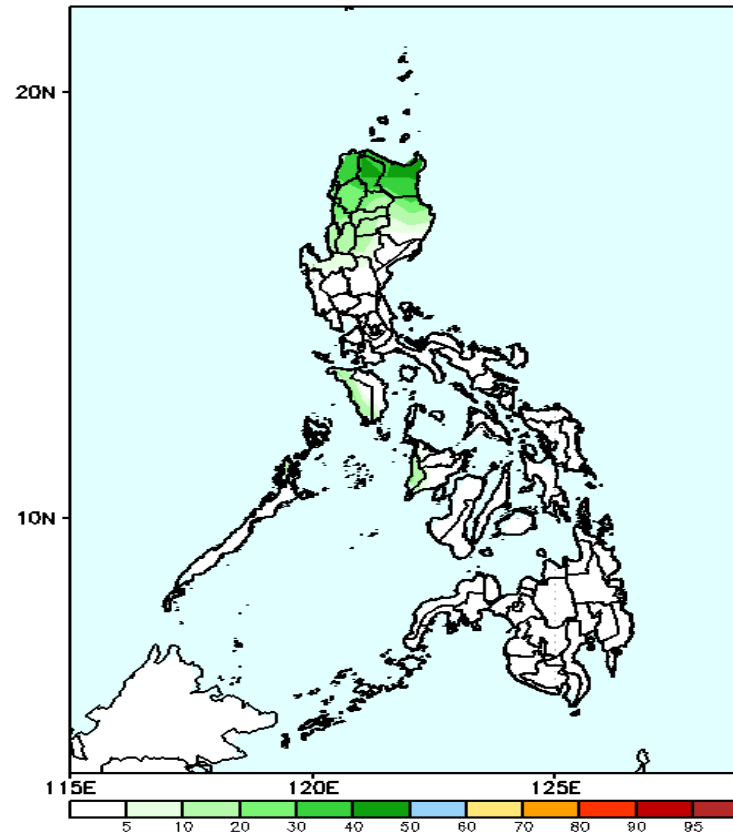
GEFS Week-1 Exceedance Prob. > 100mm
Valid: 20241028 - 20241103



Probability to Exceed 100mm

- Moderate to high over Extreme Northern Luzon and Antique;
- Low to moderate over the rest of Cagayan and Apayao;
- Low over the rest of the country;

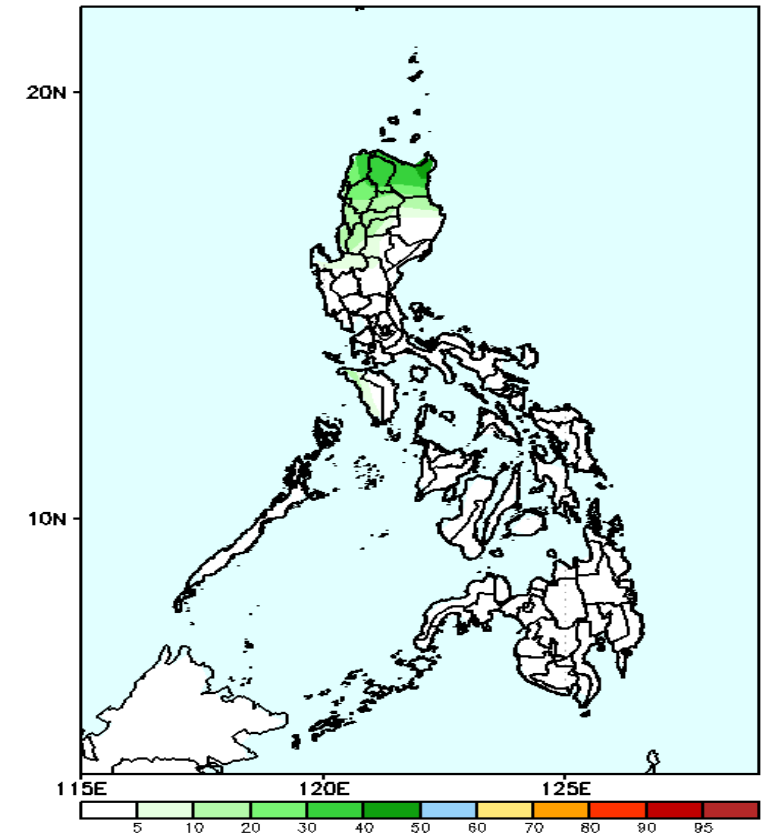
GEFS Week-1 Exceedance Prob. > 150mm
Valid: 20241028 - 20241103



Probability to Exceed 150mm

- Low across the country.

GEFS Week-1 Exceedance Prob. > 200mm
Valid: 20241028 - 20241103



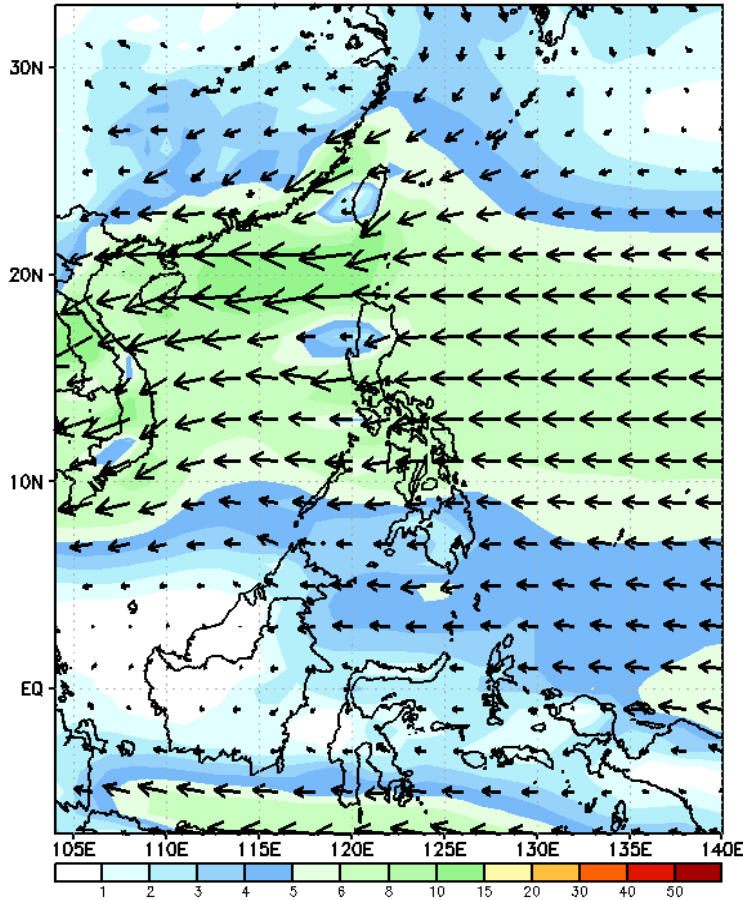
Probability to Exceed 200mm

- Low across the country.

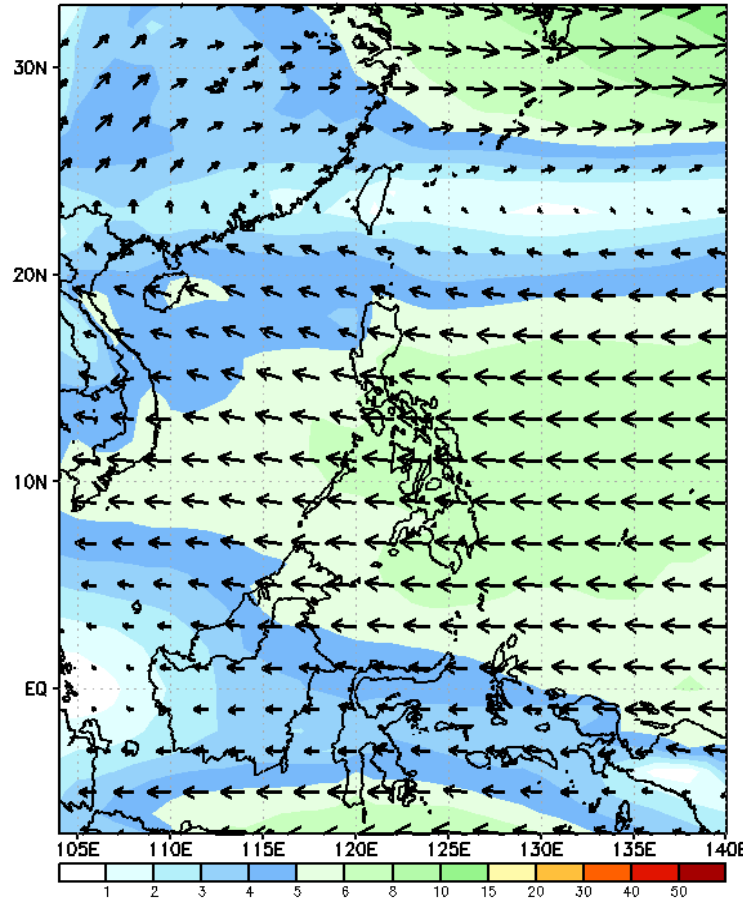
GEFS Week-2 Wind Forecasts:

Week 2: Nov 04-10, 2024

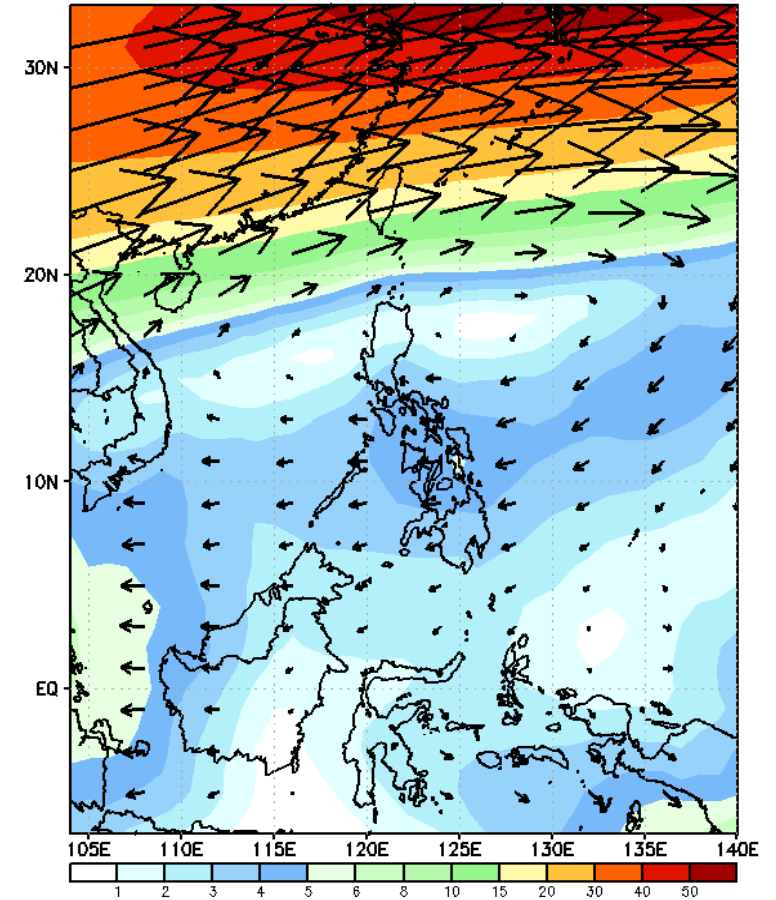
GEFS Week-2 850-hPa Wind Total
Valid: 20241104 - 20241110



GEFS Week-2 700-hPa Wind Total
Valid: 20241104 - 20241110

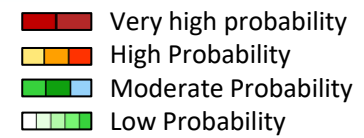


GEFS Week-2 200-hPa Wind Total
Valid: 20241104 - 20241110



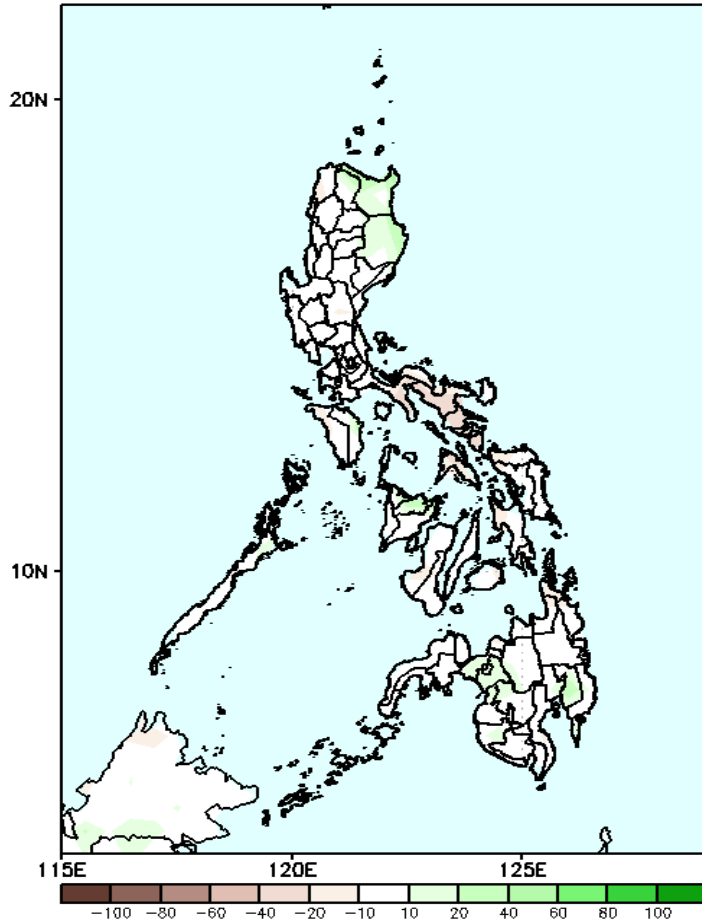
Northeasterly windflow is forecasted to affect Extreme Northern. Easterlies will likely affect the rest of the country.

Precipitation Anomaly and Exceedance Probability > 25/50 mm



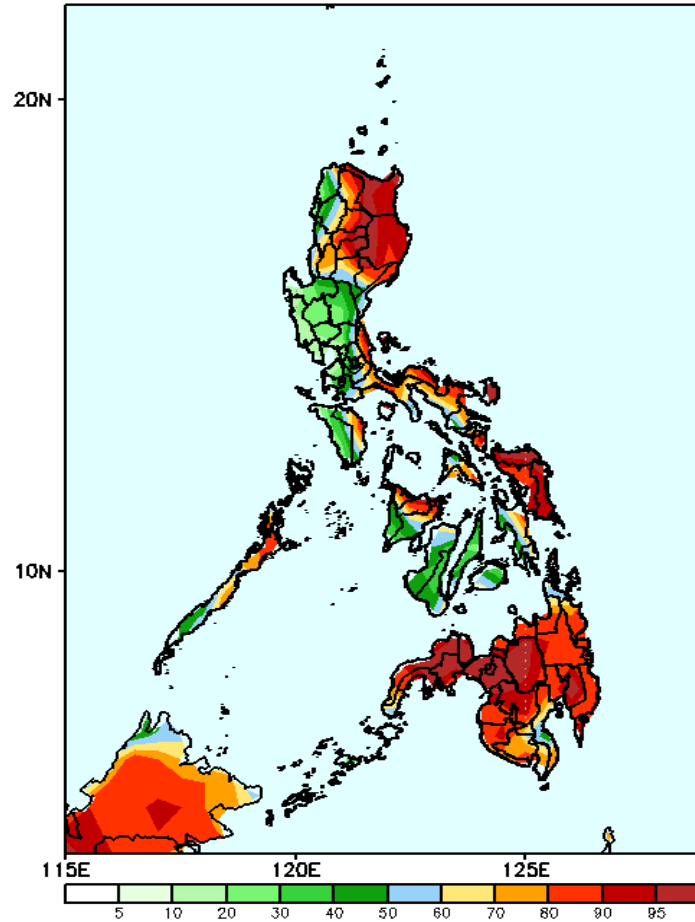
Week 2: Nov 04-10, 2024

GEFS Week-2 Precip Anomaly
Valid: 20241104 - 20241110



Increase of rainfall of 10-60mm is likely in Apayao, Cagayan, Isabela, Capiz, Compostela Valley, and Lanao provinces while 10-40mm rainfall deficit is expected in Bicol Region.

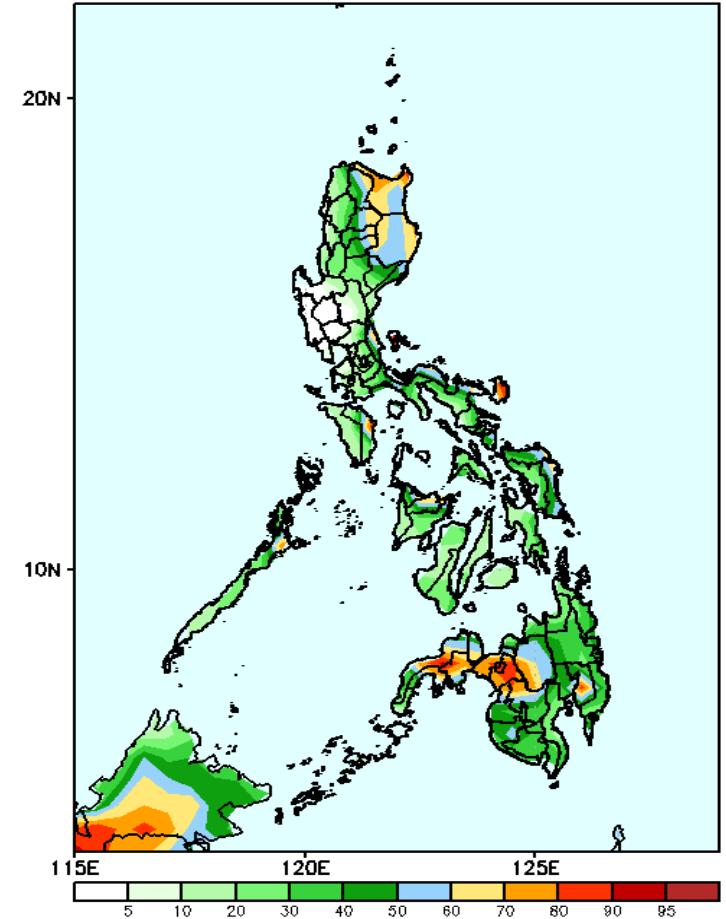
GEFS Week-2 Exceedance Prob. > 25mm
Valid: 20241104 - 20241110



Probability to Exceed 25mm

- High to very high over most parts of eastern Luzon, CAR, Samar provinces, eastern Panay, northern Palawan, and Mindanao
- Low to moderate over the rest of the country.

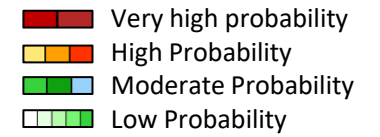
GEFS Week-2 Exceedance Prob. > 50mm
Valid: 20241104 - 20241110



Probability to Exceed 50mm

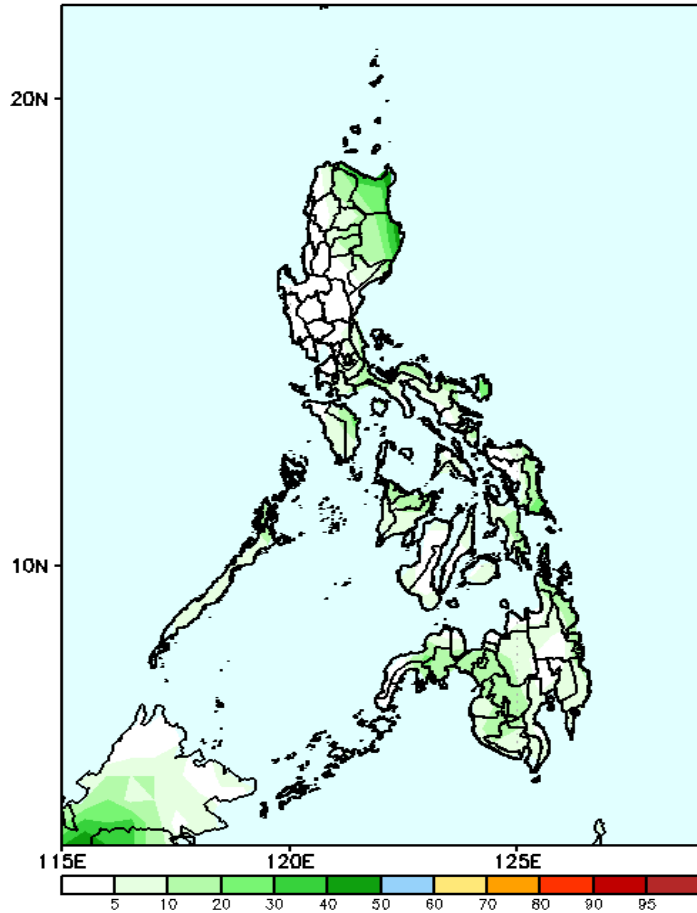
- Moderate to high over Cagayan Valley, portion of CAR, the northern part of Camarines provinces and Palawan, Catanduanes, and some parts of Quezon, Occidental Mindoro, Northern and Eastern Samar, Capiz, Aklan, Bukidnon, Lanao Provinces, and Zamboanga Peninsula;
- Low to moderate over the rest of the country.

Exceedance Probability > 100/150/200 mm



Week 2: Nov 04-10, 2024

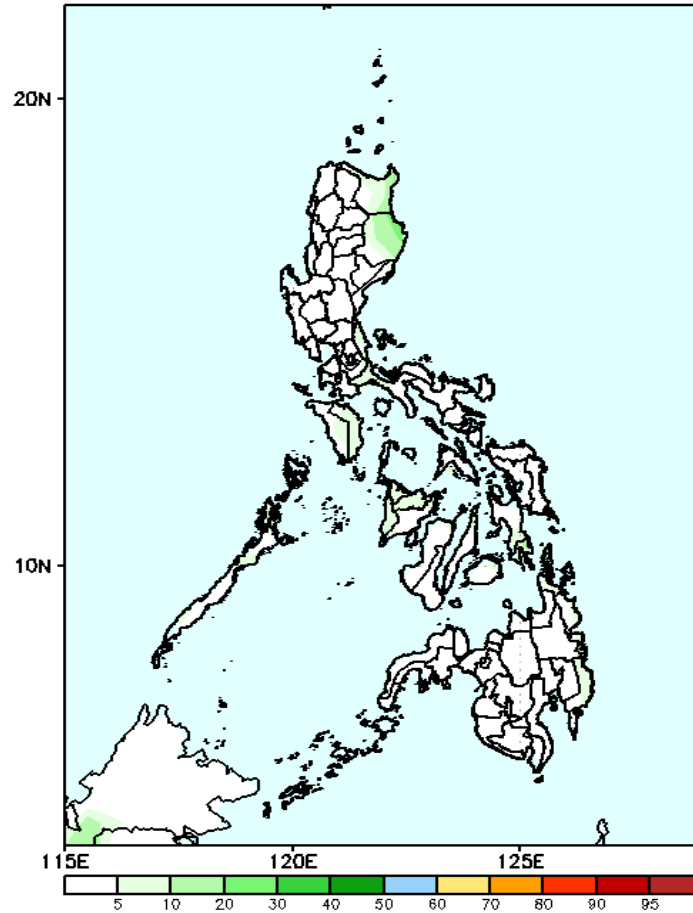
GEFS Week-2 Exceedance Prob. > 100mm
Valid: 20241104 - 20241110



Probability to Exceed 100mm

- Low to moderate over the northern part of Cagayan and eastern part of Isabela;
- Low over the rest of the country;

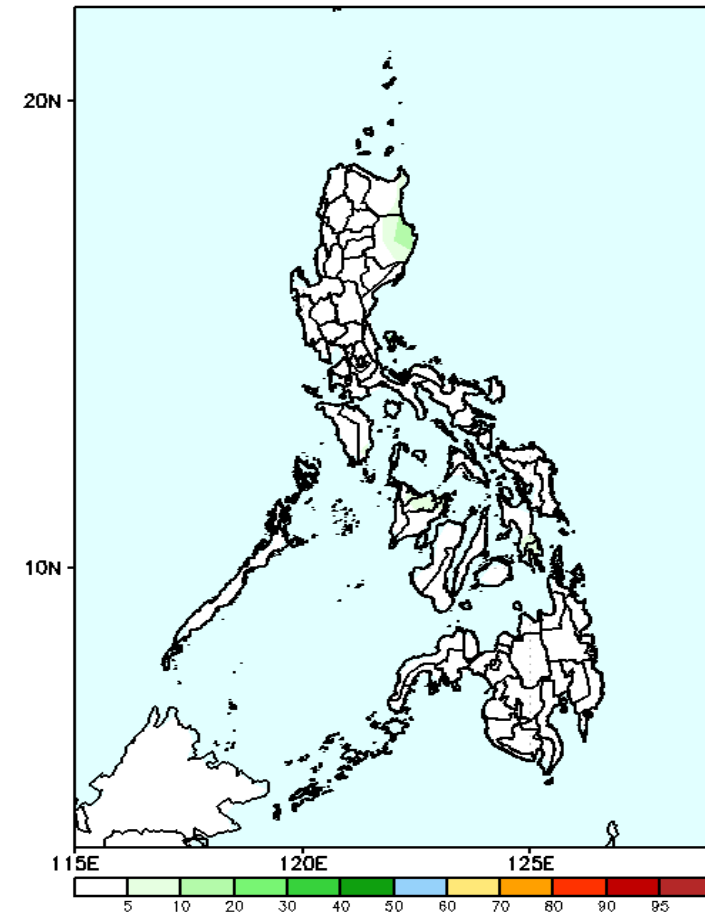
GEFS Week-2 Exceedance Prob. > 150mm
Valid: 20241104 - 20241110



Probability to Exceed 150mm

- Low across the country.

GEFS Week-2 Exceedance Prob. > 200mm
Valid: 20241104 - 20241110

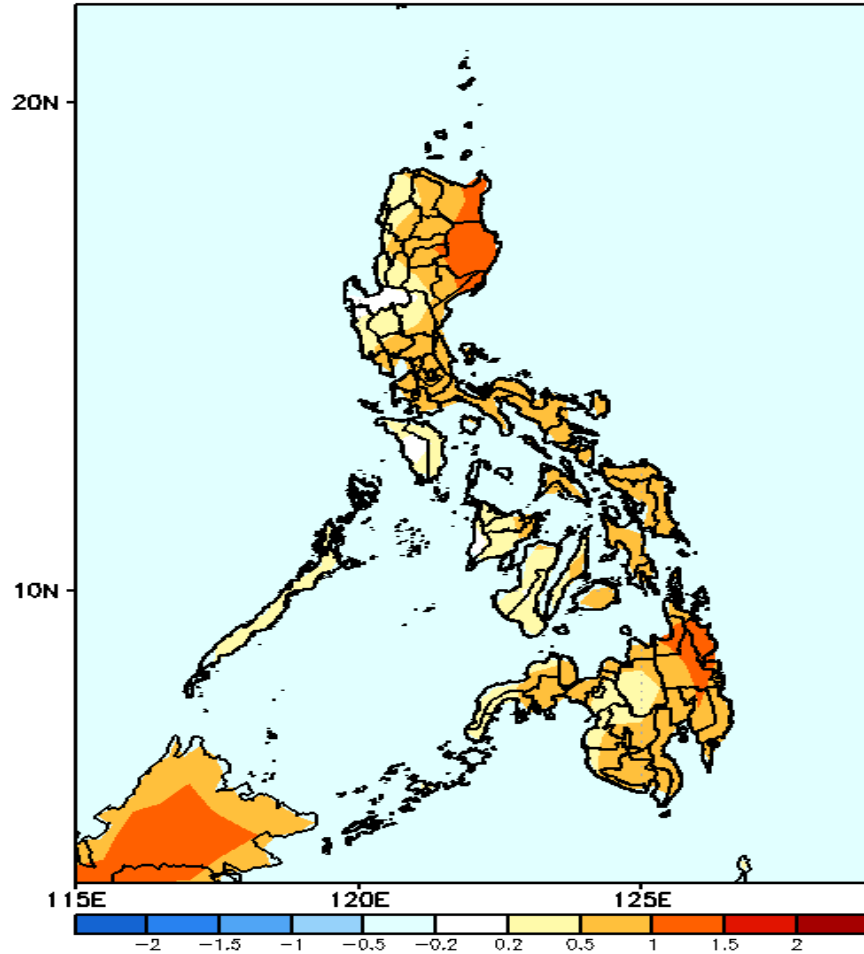


Probability to Exceed 200mm

- Low across the country.

GEFS Week-1 & 2 Forecasts: T2m Anomaly

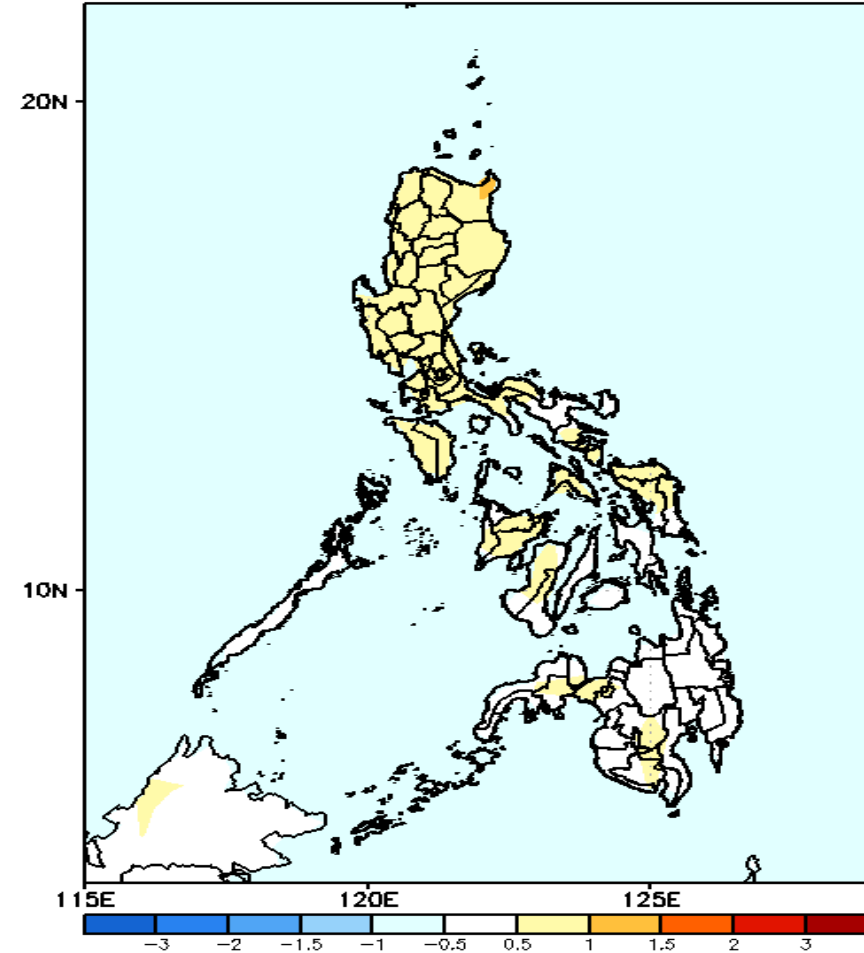
GEFS Week-1 T2m Anomaly
Valid: 20241028 - 20241103



2m Temperature Week 1: Oct 28- Nov 03, 2024

Slightly warmer to warmer than average surface air temperature will likely be experienced in most parts of the country.

GEFS Week-2 T2m Anomaly
Valid: 20241104 - 20241110



2m Temperature Week 2: Nov 04-10, 2024

Near to slightly warmer than average surface air temperature will likely be experienced in most parts of the country.